



EDUCATION AND CHILDREN'S SERVICES

EYEMOUTH PRIMARY SCHOOL RELOCATION AND EARLY YEARS AND FAMILY CENTRE, STATUTORY CONSULTATION

DRAFT PROPOSAL PAPER

STATUTORY CONSULTATION PERIOD FROM 06TH OCTOBER 2025 TO 8TH December 2025

It is proposed, subject to the outcome of this statutory consultation process as set out in the Schools (Consultation) (Scotland) Act 2010 (as amended):-

1. A Relocation of Eyemouth Primary School currently situated on Coldingham Road, Eyemouth to a reconfigured and extended Eyemouth High School building at Gusgreenhill, Eyemouth TD14 5LZ which will accommodate the relocation of Eyemouth Primary school (Children in Primary 1 to Primary 7)
2. Reconfiguration and extension work is undertaken to Eyemouth High School, to provide for the relocation of Eyemouth Primary School.
3. The Current Eyemouth Primary School and associated accommodation is demolished.
4. An Early Learning and Childcare (ELC/ Nursery) provision is located within a purpose-built Early Years and Family centre on the site of the existing primary school, once demolished.

This Proposal Paper is issued by Scottish Borders Council Education and Children's Services in terms of the Schools (Consultation) (Scotland) Act 2010. as Amended.

1. THE PROPOSALS

1.1 Statutory Context

This Proposal Paper has been prepared by Scottish Borders Council's Children and Young People's Services in accordance with the Schools (Consultation) (Scotland) Act 2010, as amended (the 2010 Act). The 2010 Act sets out a consultation procedure that a Local Authority must follow for certain proposals affecting schools in their area. The current proposals to:-

1. Relocation of Eyemouth Primary School to a reconfigured and extended Eyemouth High School building which will accommodate the relocation of Eyemouth Primary school (Children in Primary 1 to Primary 7)
2. Reconfiguration and extension work is undertaken to Eyemouth High School, to provide for the relocation of Eyemouth Primary School.
3. Current Eyemouth Primary School and associated accommodation is demolished.
4. An Early Learning and Childcare (ELC/ Nursery) provision is located within a purpose-built Early Years and Family centre on the site of the existing primary school, once demolished.

These are deemed "relevant proposals" in terms of the 2010 Act (the Proposals) and are therefore subject to the statutory consultation procedure specified in the 2010 Act.

These proposals have implications on:-

- Eyemouth Primary School and Early Learning and Childcare provision and
- Eyemouth High School
- These are both deemed Affected Schools in terms of the 2010 Act.
- *None of the proposals are school closures or affect rural schools in terms of the Scottish Government's Rural Schools List 2025.* None invoke the closure provisions within the 2010 Act.

- Eyemouth Contact Centre- Officers understand that there is currently a Scottish Borders Council Contact Centre which is located within the associated accommodation on site at the current primary location at Coldingham Road, and this will need to be relocated should the proposals proceed. A separate review of options will be undertaken by officers with oversight of the contact centre to determine the best outcome for the services which are conducted from the Contact Centre. This will not form part of the Statutory Consultation, but a

separate operational review will be undertaken to consider options for the relocation of this contact centre.

1.2 Proposals and Affected Schools

It is proposed that, subject to the outcome of this statutory consultation process, to relocate all Eyemouth Primary Provision (p1- p7) to alongside the existing Secondary school within the campus of Eyemouth High School to provide a coherent and progressive 5-18 learner journey, which will be a seamless transition through the stages of education and learning, improving stability, security and confidence for every learner in line with the Curriculum for Excellence. The campus will provide a single campus site for learning and education for all within the Eyemouth Community. The reconfigured and extended high school building will accommodate the relocation of Eyemouth Primary School which will retain its existing management structure and model and simply relocate to a newer state of the art building adjacent to the high school.

1.3 In addition, the creation of an early learning and childcare (nursery) provision to be located within a purpose-built early years and family centre on the site of the existing primary school will enable parents to build strong community based relationships and receive excellent support, which will shift from single to multi agency and aim will be to intervene earlier and view the community as the greatest support for a family.

1.4 Pupils attending

1. Eyemouth Primary School
2. Eyemouth High School

Will be deemed Affected Schools in terms of the 2010 Act and be subject to these proposals.

1.5 The Proposed Date for the opening of the relocated Eyemouth Primary school to the new build extension and works within Eyemouth High School building will August 2028. However, this will need to be flexible for transition for staff and pupils from Eyemouth Primary to the relocated building within Eyemouth High School building.

1.6 The Proposed date for the opening of the new build Early learning and childcare (nursery) provision is located within a purpose-built early year and family centre on the site of the existing primary school (Coldingham Road) will be July 2027. However, this will require to be flexible to allow for relocation of the staff and pupils from Eyemouth Primary to the new relocated building at the new campus at Eyemouth High School and will be implemented once the existing primary building has been demolished.

2. SUMMARY OF THE PROCESS FOR THIS PROPOSAL PAPER PUBLICATION INFORMATION

2.1 Proposal Paper Published

2.1.1 The proposal paper will be available for inspection, free of charge, at:

- Council Headquarters, Newtown St Boswells, TD6 0SA
- Eyemouth Primary School and Nursery
- Eyemouth High School,
- Eyemouth Library,

and published on the Scottish Borders Council website:

2.1.2 Copies of this Proposal Paper are also available on request from:

Scottish Borders Council Headquarters Newtown St Boswells Melrose TD6 0SA. or by emailing schoolestates@scotborders.gov.uk and clearly stating that you wish a copy of the Proposal Paper for the Eyemouth Primary School Relocation and Early Years and Family Centre Build Consultation.

1.3 This Proposal Paper is available in alternative formats or in translated form for readers whose first language is not English for anyone who requests this.

2.1.4 Formal notice of the Proposals and relevant information will be given and be made available, free of charge, to the consultees listed as follows:

- the parents/carers of the children who attend Eyemouth Primary School, Eyemouth Early Learning and Childcare and Eyemouth High School (the Affected Schools)
- the Parent Councils of the Affected Schools;
- the parent/carers of any children likely to attend the Affected Schools or any Affected School within two years of the date of the publication of the Proposals Paper;
- the pupils attending the Affected Schools insofar as the Education Authority considers them to be of a suitable age and maturity;
- any Trade Union which is representative of the staff;
- the Staff (teaching and non-teaching) at the Affected Schools :-Eyemouth Primary School and Eyemouth High School.
- the Community Council of Eyemouth
- the constituency Member of the Scottish Parliament;
- the constituency Member of Parliament;

- the List Members of the Scottish Parliament.

2.2 Advertisement in Local Media

Advertisements will be placed in the relevant local media and on Scottish Borders Social Media and Website the week **beginning 1st October 2025**, giving the dates for the consultation period and for public meetings.

2.3 Consultation Period

The consultation for this Proposal will run **6th October 2025 and will end on 8th December 2025**. This period allows for the statutory minimum of six weeks, including at least thirty school days.

2.4 Public Meetings

A public meeting will be held during the consultation period , the details of which are set out below :

Wednesday 12th November at 6pm -7pm at Eyemouth High School

2.5 Format of Public Meeting

Anyone wishing to attend the public meeting is invited to do so. The meeting, which will be convened by Scottish Borders Council, will be addressed by the Director of Education and Children's Services and other relevant parties.

The meeting will provide an opportunity to:

- Hear more about the proposals
- Ask questions about the Proposals
- Have your views recorded so that they can be considered as part of the Proposals process.

A note will be taken at the meeting of comments, questions and officer responses. These notes will be published on the Council website and a copy will be made available on request. These notes will be forwarded to Education Scotland, along with other submissions and comments received by the Council during the consultation process.

2.6 Meetings with Pupils and Staff

Meetings will be held with pupils and staff in the Affected Schools being Eyemouth High School and Eyemouth Primary School and any such further stakeholders who should be consulted in terms of the Act.

A record of questions, responses and views will be taken, and this will be published in the Consultation Report.

3. RESPONSES TO THE PROPOSAL

3.1 A consultation regarding a proposed change to your child's or your community's school is your chance to share your views. Your responses can really shape and influence future decisions; you can play your part by:

- Submitting a written or electronic response to Scottish Borders Council as outlined below;

- Attending the public meeting on **Wednesday 12th November at 6pm -7pm at Eyemouth High School**

and asking questions;

- Speaking to your local Councillors;

- Engaging with your school's Parent Council. The Parent Council can play a key role in engaging with the Council throughout the process;

- Make representations as part of your Community;

- Informing Scottish Borders Council if you think that this Proposal Paper has significant inaccuracies or omissions.

3.2 All interested parties are invited to respond to the Proposal by making written or electronic submissions on the Proposal to: -

<https://scotborders.citizenspace.com/regulatory-services/statutory-eyemouth-2025>

Or via QR CODE



3.3 A response form is also available by writing to :-

Eyemouth Primary School Relocation and Early Years and Family Centre Build
Consultation, Children and Young People's Services Scottish Borders Council Council
Headquarters, Newtown St Boswells Melrose TD6 0S or at the web address :-

<https://scotborders.citizenspace.com/regulatory-services/statutory-eyemouth-2025>

3.4 Use of the response form is not compulsory If you wish to respond by letter or electronically, you are invited to state your relationship with the school – for example,

“pupil”, “parent”, “carer”, “relative”, “former pupil”, “teacher in school”, “member of the community” etc. Responses from Parent Councils, staff and Pupil Councils are particularly welcome and send in your response to the address above. A copy of the response form is provided in Appendix 3.

3.5 Those sending in a response, whether by letter or electronically, should note that their response will be open to public scrutiny and may be supplied to anyone making a reasonable request to see it. If they do not wish their response to be made publicly available, they should clearly write on the document: “I wish my response to be considered as confidential with access restricted to Councillors and Council Officers of Scottish Borders Council”. Otherwise, it will be assumed that the person making the response agrees to it being made publicly available.

3.6 All written responses must be received by the last day of the consultation period, 8th December 2025 at 5.00pm.

3.7 Education Scotland has prepared guidance regarding School Consultations. This can be accessed at Education Scotland's Guidance on School Consultations. [About Schools Consultation | School consultations | What we do and how we do it | Inspection and review | Education Scotland](#)

4. INVOLVEMENT OF EDUCATION SCOTLAND

4.1 A copy of this Proposal document will be sent to Education Scotland by Scottish Borders Council. Education Scotland will also receive a copy of any relevant written representations that are received by the Council from any person during the consultation period or, if Education Scotland agree, a summary of them.

Education Scotland will further receive a summary of any oral representations made to the Council at the public meeting that will be held and, as available (and so far as otherwise practicable), a copy of any other relevant documentation. Education Scotland will then prepare a report on the educational aspects/ benefits of the proposal not later than 3 weeks after the Council has sent them all representations and documents mentioned above. In some cases, it is possible for them to extend the 3 weeks with the agreement of the Authority. However, for the avoidance of doubt, the 3-week period will not start until after the consultation period has ended.

4.2 Education Scotland has agreed that due to the school holidays over the festive period that their period for consideration of the report will be from **10th December until 7th January 2026**.

4.3 In preparing their report, Education Scotland may enter the affected school(s) and make such reasonable enquiries of such people there as they consider appropriate and may make such reasonable enquiries of such other people as they consider appropriate during that time. Education Scotland will consider the Council submission and advise of their response accordingly within their report. Education Scotland will provide a report by 7th January 2026.

5. PREPARATION OF CONSULTATION REPORT

5.1 The Council will review the Proposals having regard to the Education Scotland report submitted by 7th January 2026, the written representations that it has received, and oral representations made to it by any person at the public meeting. It will then prepare a Consultation Report.

5.2 This Report will be published in electronic and printed formats and will be advertised in local newspapers. It will be available on the Council website and from Council Headquarters, public libraries in the vicinity of the Affected Schools, as well as the Affected Schools, free of charge. Anyone who made written representations during the consultation period will also be informed about the report. The report will include a record of the total number of written representations made during the consultation period, a summary of the written representations, a summary of the oral representations made at the public meeting, the Authority's response to the Education Scotland Report as well as any written or oral representations it has received, together with a copy of the Education Scotland Report and any other relevant information, including details of any alleged inaccuracies and how these have been handled.

5.3 The Consultation Report will also contain a statement explaining how it complied with the requirement to review the Proposal in light of the report by Education Scotland and representations (both written and oral) that it received. Education Scotland will provide commend on the educational benefits of the Proposal and the Consultation report will be attached to the Consultation report. Scottish Borders Council will ensure that considerations received from Education Scotland are included in the final Consultation report. This final Consultation report will be made available, and notification will be given to those individuals or groups that have made representations during the consultation period.

5.4 The Consultation Report will then be published and available for further consideration for a period of three weeks, before it is presented to Full Council at the next scheduled Council meeting. There is no set time for the Consultation Report to be compiled and published, but it is expected that it will be published for three weeks, and then presented to full Council at the meeting of **19th February 2026**.

6. NOTE ON CORRECTIONS

If any inaccuracy or omission is discovered in this Proposal Paper, either by Scottish Borders Council or any person, Scottish Borders Council will determine if relevant information has been omitted or there has been an inaccuracy. It will then take appropriate action which may include the issue of a correction or the re-issuing of the Proposal Paper, or the revision of the timescale for the consultation period, if appropriate. In that event, relevant consultees and Education Scotland will be advised.

7 SCOTTISH BORDERS COUNCIL DECISION

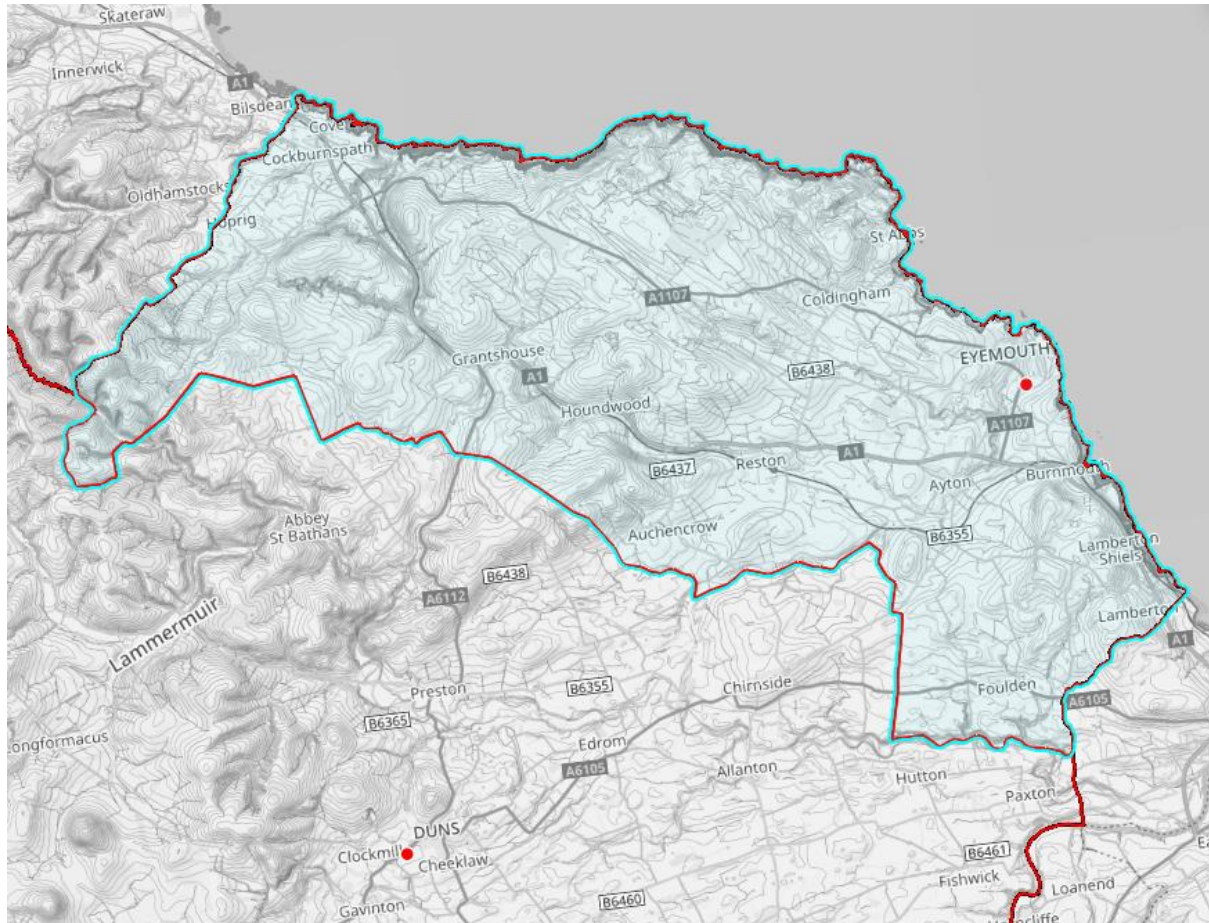
7.1 No decision will be taken in regard to the Proposals or any changes put into effect by either Scottish Borders Council or the Scottish Borders Council's Executive (Education) Committee until the statutory consultation process has been properly completed and the final Consultation report has been concluded, published and subsequently presented to full Council or the Scottish Borders Council's Executive (Education) at the council meeting on 19th February 2026.

The above Consultation Timeline encompasses statutory legislative requirements detailed as per Schools (Consultation) (Scotland)Act 2010 (As Amended) and pertains to a relocation and build of a new nursery and family centre.

8.BACKGROUND TO THE PROPOSAL

8.1 Eyemouth Primary and High Schools are located in the town of Eyemouth in the East Berwickshire of Scottish Borders. The population of the town is approximately 3700.

The catchment map of the Eyemouth High School can be seen below:-



8.2 Eyemouth High School was opened in 2009 as part of a larger project to build three new secondary schools in the Scottish Borders. The school was delivered as part of a £60 million initiative to provide state-of-the-art, modern buildings that provided new sports pitches and community facilities for the area. The footprint of the school has been assessed to have significant additional capacity to enable an increase to the pupil roll.

8.3 The high school is funded and operated under a public-private partnership between Scottish Borders Council and Scottish Borders Education Partnership (SBEP).

8.4 Eyemouth Primary was co-located with high school facilities until the provision of the new high school build. When the high school vacated their building, some cosmetic upgrades were undertaken within the primary accommodation, however the building is not suitable for modern education and has significant condition issues.

9 REASONS FOR THE PROPOSAL

9.1 Suitability of Existing Eyemouth Primary Building

In line with the Council's asset management strategy condition surveys are undertaken on a rolling programme by team led by a chartered building surveyor. The suitability assessment is undertaken with the Head Teacher and validated by Senior Managers within Education and Children's Services. These assessments are undertaken approximately every four years unless significant building or operational change has occurred within the school requiring additional assessment.

9.2 The definition and assessment categorisations are set by the Scottish Government as follows: -

Condition – is an assessment of the physical condition of the school and its grounds.

A: Good Performing well and operating efficiently

B: Satisfactory Performing adequately but showing minor deterioration

C: Poor Showing major defect and/or not operating adequately

D: Bad Life expired and/or serious risk of imminent failure

Suitability - an assessment of the school as a whole, its buildings and its grounds and of the impact these have on learning and teaching, leisure and social activities and the health and well-being of all users:

A: Good Performing well and operating efficiently

B: Satisfactory Performing well but with minor problems

C: Poor Showing major problems and/or not operating optimally

D: Poor Does not support the delivery of services to children and communities

9.3 Eyemouth Primary School, Coldingham Road, Eyemouth TD14 5AN is rated "C" for Condition and "C" for Suitability. The latest Suitability Survey was undertaken in October 2024 and is attached in full at Appendix 2.

Fundamentally, the existing school faces significant challenges with accessibility, infrastructure and maintenance which has impacted its overall functionality and usability. Eyemouth Primary school has been assessed as "c" due to the following features:-

9.4 While classrooms are large and well-suited for traditional teaching, the school lacks flexible spaces to accommodate evolving teaching methods. Breakout spaces are

insufficient, and makeshift areas under staircases or in hallways create noise and disrupt focus.

9.5 Insufficient storage forces materials to overflow into hallways and teaching spaces, creating clutter and reducing the usability of these areas for pupils and staff.

9.6 P5–P7 classrooms are accessible only via stairs, creating a significant barrier for pupils or staff with mobility challenges.

9.7 The school struggles to maintain comfortable temperatures, with classrooms often being too hot or too cold due to an outdated HVAC system.

9.8 The only functional water fountain is leaking, damaging surrounding carpets, while water from faucets has been deemed unsafe to drink.

9.9 Older sections of the building have been unofficially condemned due to mould and asbestos concerns, yet these areas are still used for storage by staff.

9.10 Many of the school’s fixtures, including smartboards and water fountains, are outdated or broken, impacting both teaching and general usability. • The combination of noise issues, poor temperature regulation, and outdated technology significantly impacts the quality of learning and teaching.

9.11 The lack of breakout rooms and quiet zones combined with disorganised storage, reduces the school’s ability to adapt to diverse teaching methods and pupil needs. The table below shows the issues of concern and their assessment banding:-

	General Learning & Teaching	Internal Social Areas	Internal Facilities	External Social Areas	External Facilities	Total:
Functionality	B	C	C	A	D	B
Accessibility	D	D	C	B	D	D
Environmental Conditions	C	C	C	B	C	C
Safety & Security	C	B	C	B	B	C
Fixed Furniture & Fittings	C	C	C	A	C	C
Total:	C	C	C	B	C	C

10 Options

10.1 The 10-year capital plan set by Scottish Borders Council in February 2019 committed £16 million for the replacement of Eyemouth Primary School. Consultation on proposals to provision a new primary school within the existing site alongside housing and extra-care facilities had been met with some resistance at an earlier engagement however there remained strong agreement that the facilities for primary education were in urgent need of replacement.

10.2 A report to Scottish Borders Council on 27 August 2020 identified issues affecting the delivery of the proposed replacement of the Primary School in Eyemouth. The Report also identified cost pressure issues. The Report approved that a feasibility study should be undertaken to review 3 education delivery models within Eyemouth. These three models were:

Option 1: Replacement Primary School adjacent to the existing Primary School and retention of the existing Secondary School.

Option 2 :Full use of the existing Secondary School for both Primary and Secondary education with the addition of an adjacent Early Years Centre.

Option 3: Partial use of the Secondary School for elements of Primary education with the addition of an adjacent Primary and Early Years Centre.

10.3 As is recommended within the Statutory Guidance, Scottish Borders Council conducted substantive discussions and consultations with the community of Eyemouth and have done so over a number of years.

10.4 The outcome of the engagement was that 54% of respondents to the consultation undertaken on these models preferred Option 3 for a campus style of education concentrated at the Secondary School with part of the Primary education being provided within the Secondary School. A separate Early Years Centre would provide for Nursery and lower Primary School education.

10.5 Comments in support of this option reflected the opportunities in all young people having access to specialist facilities and the educational benefit this will bring. Reference was made to the previous arrangement of both Primary and Secondary Schools being located in the same building and noted the benefits.

10.6 The opportunities for the older children in Primary School were viewed particularly positively with reference to the ease of transitions. The potential for families to engage with one campus and for the creation of a real sense of community was also highlighted.

10.7 Many of the comments in favour of Option 3 expressed desire that all stages of Primary School children had opportunity to connect as well as to access specialist and

shared facilities. There was clear desire that in addition to a campus for all education provision, the existing Primary School site should be developed as greenspace and a destination park provision.

10.8 Over the summer of 2024, Officers took steps to restart the project which had lapsed and continue with pre consultation engagement. This included engagement with Ward Members and a series of local community briefings. The first community briefing explained that the Council deeply regretted the time taken to progress the project, acknowledging that this, along with confusion over earlier options considered, undermined confidence and trust that the Eyemouth and East Berwickshire Community have in Scottish Borders Council

10.9 This briefing went on to explain that the Council would focus specifically on developing an education campus, the favoured solution identified by the community during the Consultation undertaken in 2020-2021.

11. Feasibility Study

11.1 Since then, a feasibility study has been undertaken to develop proposals for a new primary school at the existing High School site. The outcome of this study is that an internal refurbishment of a proportion of the existing building can accommodate a new two-stream primary school which would allow the primary to be relocated. The Primary School building will be over two areas with P1-3 and infants in one area, and p1-7 in their own area. The primary school areas would have its own separate entrance. It would be a relocation of the primary school from its existing site, and the primary school would retain its existing management structures and arrangements but simply move locations. The new primary school building would have a flexible design to allow for future expansion.

11.2 This proposal would also see the construction of a new STEM and innovation building, enhancing facilities for secondary school pupils. This proposal would ensure that occupancy and utilisation of the existing building can be fully optimised whilst supporting a smoother transition from primary to secondary school, building on the positive lessons of Jedburgh Grammar Campus.

11.3 In developing this proposal an assessment has been undertaken on school roll projections, and the design proposals will retain sufficient capacity within the primary and high school to allow for an increase in the school roll.

The current school roll for Eyemouth primary school is listed below and the projected rolls for Eyemouth PS are as follow:-

Eyemouth Primary School	2025-26	2026-27	2027-28
N3	6		
N4	15		
N5	23	15	
P1	30	47	31
P2	37	30	47
P3	40	37	30
P4	43	40	37
P5	43	43	40
P6	40	43	43
P7	46	40	43

The current school roll for Eyemouth high School is listed below:-

Eymouth High School	506
S1	82
S2	96
S3	99
S4	93
S5	76
S6	60

The projected school roll for Eyemouth High is as follows:

School	Academic Year	Projected Roll
Eyemouth High School	2026/27	481
Eyemouth High School	2027/28	472

11.4 Adopting the approach within the proposals is expected to address pressures related to potential school roll forecasts and capacity requirements, aiming to ensure sufficient availability for future needs.

11.5 Eyemouth High School, Gusgreenhill Eyemouth TD14 5LZ was built under a PPP contract with SBEP. Preliminary discussions have taken place to understand high level legal/ contractual matters, and SBEP's appetite for supporting the project. SBEP have confirmed their "approval in principle" and further discussions will progress once we have confirmed proposals and our preferred procurement route.

11.6 A project team has been appointed to progress the next stage of the project which includes further design development, including obtaining planning and building warrant consent, and construction procurement.

11.7 Officers and the project team will now concentrate on the progressing RIBA Stage 2 and Stage 3 design, ahead of submitting a planning application in circa early 2026 pending the outcome of this Statutory Consultation.

11.8 The specifications for the relocation of the primary school into the high school building and the construction of a new STEM Innovation Centre are summarised as follows:-

11.9 Primary School Relocation

- The relocation involves demolishing some existing partitions and constructing new ones, comprising both blockwork and metal stud partitions, to accommodate the proposed layout.

- Four new external openings will be formed to allow for the installation of four new windows. Existing slab openings will be infilled according to the Structural Engineer's details to maximize space and create a breakout area.
- All affected areas will include new ceilings, floor finishes, sanitary facilities, signage, and furniture, fittings, and equipment (FF&E).
- Refer to JM Architects for further details.

11.10 STEM Innovation Centre: Proposed as a new standalone, single-storey building with an industrial-style design in both appearance and construction.

Structural and External Works

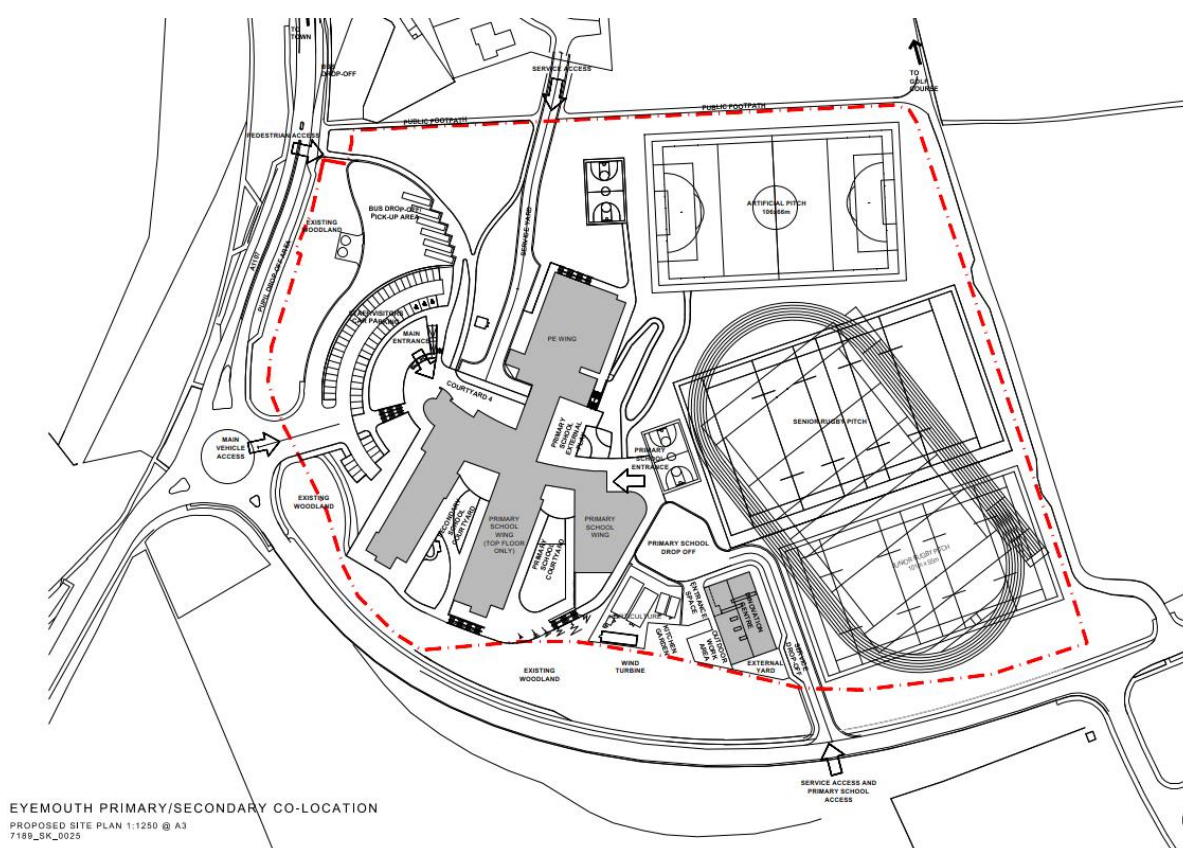
- 150mm thick concrete ground floor slab with steel structural elements and roof deck, as per Structural Engineer's design and specifications.
- External walls: either PPC aluminium standing seam cladding or cement particle board rainscreen cladding with 150mm SFS framing internally.
- Roof: PPC aluminium standing seam roof cladding on subpurlins and metal tray, per Structural Engineer's specification.
- Glazing: Three double-glazed, thermally broken PPC aluminium rooflights and a curtain wall system for all external glazed elements.
- Doors: Solid PPC-coated steel doorsets (~60 microns) and PPC-finished double-skinned insulated industrial vertical roller shutters with anti-cat system.

Internal Works

- Partitions: Metal stud partitions continuing to underside of floor/roof deck, fire- and acoustically sealed where required, with deflection head detail.
- Ceilings:
 - General classrooms: 600x600 suspended ceiling tiles.
 - Circulation, Manufacture & Industry, Design, Textiles, Collaboration, and - Visual Communication classrooms: suspended acoustic baffles (e.g., Ecophon Solo) per Acoustic Consultant's requirements.
 - Food Preparation: plasterboard ceiling combined with suspended ceiling (e.g., Ecophon Hygiene Foodtec A C3).
- Toilets: plasterboard ceilings with access hatches for M&E requirements.
- Internal Doors: Heavy-duty solid core timber door sets with laminated veneer finishes, hardwood lippings, clear glazed vision panels/side screens as required. All doors to meet fire and acoustic ratings (minimum 30dB unless advised otherwise) in accordance with Building (Scotland) Regulations and BB93.
- Internal Screens: Timber-framed glazed screens providing acoustic, safety, and fire resistance with manifestation patterns, complying with BS 6262, BS 8300-2, and current Building (Scotland) Regulations. Screens to meet horizontal crowd barrier loading criteria per Structural Engineer.

Floor Finishes

- Teaching bases, meeting rooms, and offices: Carpet tiles.
- Lobby areas: entrance matting.
- Art, Science, Food Technology, Toilets, Stores: safety vinyl sheet flooring.
- CDT: epoxy resin flooring.
- Plant areas: painted concrete.



11.9 When considering design options, a key focus is delivery of an efficient and viable learning establishment representing best value through effective and efficient use of resources. Sustainability will be a key factor and focus in the design and construction of the relocated Eyemouth primary school and will be incorporated into every element of the development process. It is the intention of Scottish Borders Council officers that important regard for materials used in the construction of the relocated primary school and importance of sustainable materials for fixtures, fitting and heating and lighting provisions to also tie in with the existing Eyemouth high school building. Layout and design plans for the proposed relocated Eyemouth primary school building are although indicative at this stage and will be an ongoing consideration throughout the consultation phase.

11.10 Early Years and Family Centre on site of existing Eyemouth Primary School

11.11 Feasibility work has also been undertaken to provide a new Early Years and Family centre in Eyemouth. This is proposed to be located on a site adjacent to the existing primary school on Coldingham Road. This will provide facilities that support early/ nursery education, and children and family social work support. This project will replace the existing family centre. The project team for the primary school project will also progress the next stage of this project, following similar timescales.

11.12 The site of the proposed New Early Years and Family Centre building is situated adjacent to the new destination play park and pump track which is currently being scoped through engagement with the local community and funded by the Play Park Capital Block. The play park project will move to design and procurement stage during the autumn with construction expected to begin in 2026. Delivering the early years and family centre alongside the destination play park and pump track begins to realise some of the ambitions of the Eyemouth Place Plan which was approved by Scottish Borders Council on 24 April 2025.

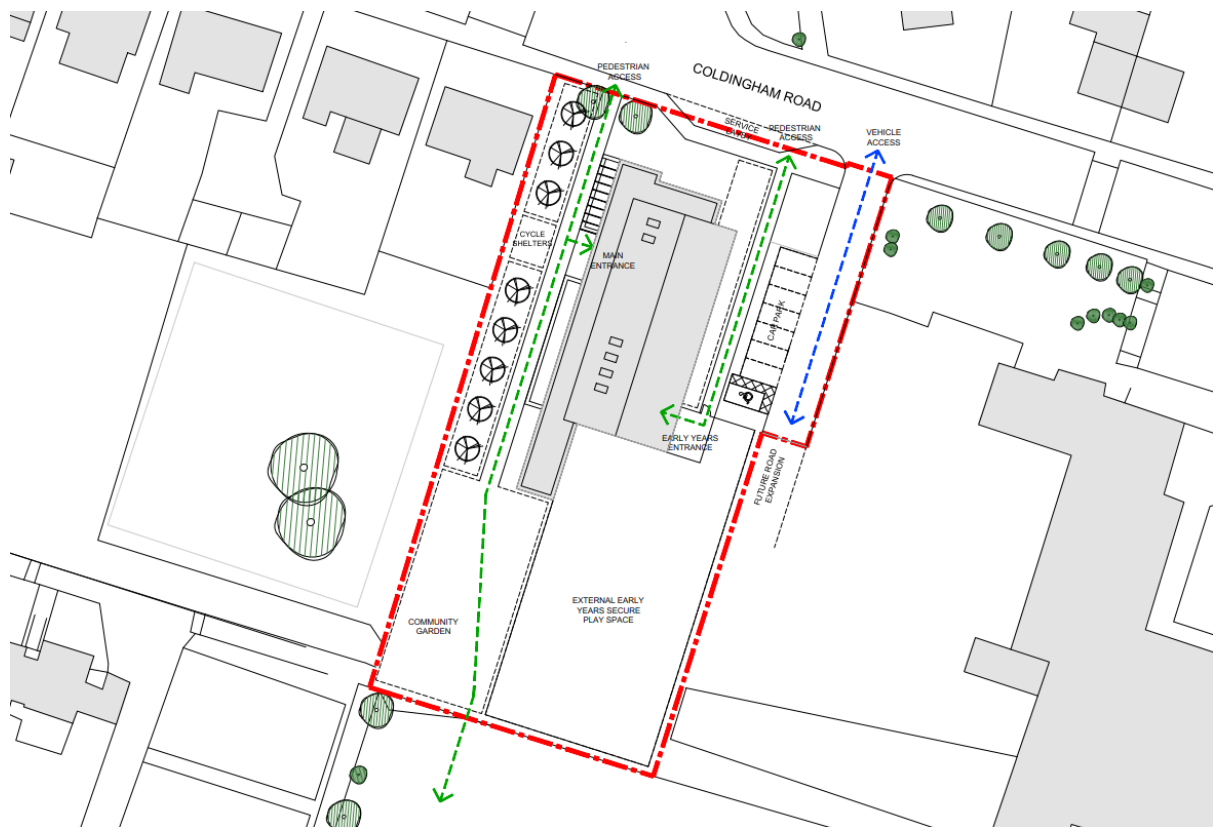
11.13 The building specification for the proposed will be as follows:- The Early Years and Family Centre is a single storey building consisting of on a pitched volume connected with a flat roof one.

11.14 Structural and External Works

- 150mm thick concrete ground floor slab with steel structural elements and roof deck, as per Structural Engineer's design and specifications
- External walls: the pitched volume consists on PPC aluminium standing seam cladding with 150mm SFS framing internally whereas the lower flat roof volume is a combination of 40mm stone rainscreen cladding and render on 100mm concrete blockwork
- Roof: the pitched volume consists on PPC aluminium standing seam roof cladding on subpurlins and metal tray, per Structural Engineer's specification. The lower flat roof is a bitumen membrane warm roof on metal deck.
- Soffits: allow for PPC Aluminium cladding panel system, supported on SFS/cladding rail system from underside of structural steel frame to covered outdoor play and secret fixed timber cladding to external soffit, on substrate and proprietary carrier system to covered outdoor play between plant and early years.
- Glazing: Five double-glazed, thermally broken PPC aluminium rooflights and a curtain wall system and casement windows for all external glazed elements.
- Doors: Solid PPC-coated steel doorsets (~60 microns).

11.15 Internal Works

- Partitions: Metal stud partitions continuing to underside of floor/roof deck, fire- and acoustically sealed where required, with deflection head detail.
- Ceilings:
 - General classrooms: 600x600 or 1200x600 Ecophon Focus A suspended ceiling system.
 - Public Lounge and Early Years: Ecophon Focus A suspended ceiling system with MF ceiling lining system lined generally with 1no layer of 15mm plasterboard ceiling to margins, downstands and bulkheads in combination with square edge white oak slats (final timber species TBC) ceiling on galvanised black painted steel T bar at 1200mm centres (Solid Wood Grill System suspended ceiling by Hunter Douglas or equal and consented to).
 - Toilets: plasterboard ceilings and/or suspended ceiling system with access hatches for M&E requirements.
- Internal Doors: Heavy-duty solid core timber doorsets with laminated veneer finishes, hardwood lippings, clear glazed vision panels/side screens as required. All doors to meet fire and acoustic ratings (minimum 30dB unless advised otherwise) in accordance with Building (Scotland) Regulations and BB93.
- Internal Screens: Optima 217 PLUS Single-Glazed Partition System, or equal. Screen system to be powder coated aluminium frame. Glazing to be laminated safety glass to BS EN ISO 12543 with frost vinyl applied manifestations in accordance with Building (Scotland) Regulations and BS 8300:2018 applied to external pane. Glazed screens to meet horizontal loading criteria as required by the Structural Engineer. Acoustic performance and fire rating as identified by Acoustician and Fire Engineer.
- Wall finishes:
 - Paint to plasterboard and to timber facings and trims
 - Splashbacks above sinks / WHB
 - Hygienic wall cladding to toilets
 - Acoustic panelling including slatted timber to meet acoustician's requirements.
- Floor finishes
Entrance matting to entrance areas; safety vinyl to toilets and kitchen areas; painted concrete to plant room; carpet tiles to offices, meeting rooms, therapy rooms and private lounge; linoleum to playroom area and circulation stores and public lounge area.
- Allow for new sanitary appliances and fittings including IPS to WCs as per JMA's proposed drawings



12. Funding

12.1 The total cost of the two projects is £15m. This will be funded by the remaining balance allocated in Scottish Borders Council's Capital Investment Programme along with £1m funding from Scottish Government Early Years Funding which needs to be committed by end of March 2027. In addition, £400k has been allocated from Community Regeneration Funding (formally Levelling Up), this also needs to be committed by end of March 2027. Current costs include for the complete demolition of the existing primary school.

12.2 Plans have been drawn up as shown in Appendix 1.

12.3 Before a final decision is made to relocate the primary school, the Council is required to undertake a statutory consultation in terms of the Schools (Consultation) (Scotland) Act 2010. This proposal is a relevant proposal in terms of this legislation. This legislation requires local authorities to undertake strong, accountable consultation in connection with all proposals to make a major, permanent changes to a school. The principal driver for any such change should be the Educational Benefits that the change will bring. This consultation process is a crucial part of the Council's decision-making process. It should be noted, that in order to progress the building programme and comply with funding requirements, the decision has been taken by the Council's project board to allow preparatory work to progress in tandem with this Statutory consultation process. The project board has acknowledged and accepted that there is risk attached to undertaking these works before a final decision is made regarding the new primary relocation and the early years and family centre build, but has balanced this against the budgetary and programme pressures of delivering new relocated Eyemouth Primary school and the new Early Years and Family centre, if the decision is made to proceed.

13. EDUCATIONAL BENEFITS STATEMENT

13.1 This section contains the expected educational benefits to be gained should the proposal to relocate Eyemouth Primary school to a newly built and extended accommodation within the Existing Eyemouth High school site, be progressed.

13.2 Scottish Borders Council has statutory duties relating to the provision of Education which we fulfil in our school provision. These duties are set out in legislation and include:-

- Education (Scotland) Act 1980, Section 1, requires the Council to secure adequate and efficient provision of school education, which has to be flexible to fit individual needs, be tailored to age, ability and aptitude.
- Standards in Scotland's Schools Etc. Act 2000, Section 3, require the Council to endeavour to raise standards and secure improvement in the quality of school education provided in our schools. The education we provide must be directed to the development of the personality, talents and the mental and physical abilities of the children or young people to their fullest potential.
- Education (Additional Support for Learning) (Scotland) Acts 2004 and 2009, requires the Council to identify and provide support for any children with additional support needs and prepare co-ordinated support plans for those with the most extensive needs.
- Scottish Schools (Parental Involvement) Act 2009 requires the Council to give advice and information to a parent of a school pupil when reasonably requested, on any matter relating to the education provided to that pupil. 8th May 2017 23
- Equality Act 2010 requires the Council not to discriminate against any pupil with protected characteristics including disabilities, sexual orientation and ethnicity. This includes admission to the school, the way education is provided, access to benefit, facility or service and exclusion. Pupils with disabilities must not be treated less favourably and reasonable steps must be taken to avoid putting these pupils at a substantial disadvantage.
- Children and Young People's Act 2014 requires the Council to implement key policies relating to Early Learning and Childcare, provide additional support for children and young people who are looked after and accommodated including kinship care, extend free school meals and strengthen the rights and participation of children and young people.
- Education Scotland Act 2016 requires the Council to consider socio-economic barriers to learning and includes provisions which extend the rights of children aged 12 and over with capacity under Additional Support for Learning Act 2009. Children who are able can use rights on their own behalf to affect decision making about them.

13.3 Scottish Borders Council sets out, within the context of national and local policies, what it is aiming to achieve in terms of raising levels of achievement and attainment and improving educational outcomes for all children and young people in the key priorities set out in the Council Service Plan and Education and Children's Services Priorities.

13.4 On 20 February 2025, a **Council Plan** was approved, setting out our strategic framework for action for the year to 31 March 2026. We have built upon last year's Council Plan which has Six key outcomes:-

13.5 The Council Plan is based on six outcomes that we aim to deliver for the Scottish Borders. Five of the outcomes focus on improving the wellbeing of citizens within the Scottish Borders and making our region a more sustainable and better place to live, work in and to visit. The sixth outcome is about developing a Council that is as effective and efficient as it can be – we need to do this in order to deliver on the other five outcomes.

Council Plan focus and respective outcomes

FOCUS	OUTCOMES
Improving the wellbeing of citizens within the Scottish Borders and making our region a more sustainable and better place to live, work in and to visit	<ul style="list-style-type: none"> • Clean, green future • Fulfilling our potential • Strong inclusive economy, transport and infrastructure • Empowered, vibrant communities • Good health and wellbeing
Developing a Council that is as effective and efficient as it can be	<ul style="list-style-type: none"> • Working together improving lives

13.6 Like last year's Council Plan, this year's has an introductory section which outlines the long-term challenges and opportunities we face as a region, and draws out a vision for where we want to be by 2033. A final section, 'Locality Actions' also highlights key priorities for SBC in all five of the localities in the Scottish Borders and one of the priorities for "Berwickshire" for the coming year would be the clear need for providing new facilities for primary education in Eyemouth, ensuring engagement with the community in the development of plans.

13.7 In terms of the Education and Children's Services Priorities for the year, there are several which are key priorities:- **FULFILLING OUR POTENTIAL PRIORITY:** Empower schools and their communities to deliver a high-quality education focused on excellence, equity, wellbeing and improved outcomes for children, young people, and families.

13.8 Create and maintain a culture that places children's rights, protection, development and voice at the heart of decisions in which they have an interest, and ensure that the Council continues to deliver on 'the Promise' to care experienced children and young people • Raise attainment in literacy and numeracy closing the

attainment gap between the most and least disadvantaged • Raise attainment through improved inclusion, equity and wellbeing for all children and young people • Improve employability skills to enable sustained positive school leaver destinations and Increase young people's participation in the planning, provision and delivery of services

13.9 There are specific targets and actions in relation to :- Children's Rights- Ensure that children, young people, parents, carers and the Council workforce know about children's rights, while ensuring the voice and lived experience of children and young people inform planning and delivery of SBC services. Commission an independent advocacy service for children and young people in the Scottish Borders.

13.10 The Promise to develop a project reviewing all out of area placements within Children & Families Social Work to bring young people currently in out-of-area placements back to the Borders, while eliminating the need for future out-of-area placements. Increase the proportion of care experienced school leavers attaining 5 or more award at any SCQF level based on Insight (All SCQF Awards) information.

13.11 Deliver against the Service Improvement plan developed by the education department with a focus on improving pathways for students and deliver improvement in qualifications performance, including:

13.12 Transform the Senior Phase Curriculum Year 1(S4) aiming to improve attainment, curricular pathways and qualifications. Create a SBC leadership academy to develop opportunities to upskill teachers, headteachers and senior leaders and create pathways for aspiring leaders within the Education service.

13.13 Continue to ensure that the best approaches to support neurodivergent learners are developed and shared, by ensuring that all staff have engaged with awareness training on neurodiversity and implement best practice.

13.14 Implement the SBC Outdoor learning Strategy to ensure that children and young people in Borders Schools benefit from a consistent and high-quality wellbeing-focused approach to outdoor play and activity.

13.15 Increase the proportion of 16-19 olds participating in education, employment or training (based on the Annual Participation Measure produced by Skills Development Scotland). Working with partners, develop an esports strategy focused on design, entrepreneurship, and inclusivity with a view to garnering opportunities for our region from this developing £3 Billion industry.

13.16 Implement our multi-agency children and young people's participation and engagement strategy (the YELL strategy), ensuring that the voices of children and young people across the Borders, in particular those with protected characteristics, are at the heart of our decision-making.

13.17 All our schools in the Scottish Borders are expected to deliver Curriculum for Excellence as set out within the four capacities and the experiences and outcomes. The

curriculum aims to ensure that all children and young people in Scotland develop the knowledge, skills and attributes they will need if they are to flourish in life, learning and work now and in the future.

13.18 The purpose of the curriculum is encapsulated in the four capacities to enable each child or young person to be:

1. a successful learner;
2. a confident individual;
3. a responsible citizen; and
4. an effective contributor.

13.19 Therefore, Scottish Borders Council's school estate must be fit for purpose and support the delivery of Curriculum for Excellence whilst maximising educational opportunities and benefits for all our children and young people.

13.20 Scottish Borders Council's Education and Children's Services directorate has a further duty to deliver a service which meets the criteria for best value, in terms of efficiency, effectiveness, economy and equal opportunities, and which meets the agreed priorities in the Scottish Borders Council Plan.

13.21 The Educational Benefits of the Proposals have been assessed taking account of all the above stated factors and having regard to the Guidance and Explanatory Notes published by the Scottish Government in association with the 2010 Act.

14. EDUCATIONAL BENEFITS OF THE PROPOSAL- IMPACT ON PUPILS AND FUTURE PUPILS

14.1 Relocation of Primary School

The proposal to relocate all primary education provision from Primary 1 to primary 7 within the campus of Eyemouth High School and therefore relocate the existing primary school to a new building at the high school site, will provide a coherent and progressive 5-18 learner journey which will allow children to progress from p1 through to s6 on the same campus, which will allow a seamless transition through the stages of education and learning, improving stability, security and confidence for every learner in line with the Curriculum for Excellence.

14.2 The Campus will facilitate a joint 5-18 approach promoting enthusiasm and engagement amongst staff, children and young people and parents. This continuity of learning will allow a more effective and efficient deployment of resources and a more consistent approach to delivery of high-quality learning and teaching, with assessment, tracking and target setting throughout each pupil's learning, leading to improved attainment.

14.3 Relocating Eyemouth primary to co-locating the primary and high schools will facilitate improved planning with a more coherent and comprehensive learning journey, embedding pathways for learning beyond the physical boundaries of separate stages of education. The Campus will lead to improved and continued pastoral care throughout the children and young people's learning journey.

14.4 The facilities will inspire motivate and encourage a wide range of learning and teaching approaches and learning spaces in line with the Curriculum for Excellence, supporting innovation, creativity and the development of children and young people's skills for life-long learning and work by having a creative environment and access to vocational learning. It will also allow more collaborative teaching between primary and secondary staff e.g. Expressive Arts, Technology, Home Economics, Science and Modern Languages.

14.5 The new facilities will allow an innovative broader curriculum to be introduced with pupils sharing wider more varied learning experiences than are currently possible. This will include opportunities for vocational learning and training in skills.

14.6 The facilities for primary children will be far superior to the current existing schools, which will create an enhanced environment for learning, personal development and opportunities for healthy living. It will allow pupils to move confidently through the stages of learning giving better opportunities for social development and enhance relationships between younger and older children.

14.7 Currently the learning environments, in aging buildings, inhibit rather than facilitate and support delivery of the Curriculum of Excellence. The creation of the new facilities will allow an innovative approach regarding curriculum as the Council strives to raise attainment and achievement through literacy, numeracy, health and wellbeing and improve the learning journey for all learners.

14.8 Staff expertise in literacy teaching will be enhanced as all staff will understand the learners' experience of literacy as a lifelong journey concept rather than a class stage experience.

14.9 STEM CENTRE. Science, Technologies, Engineering and Mathematics (STEM) and Innovation.

There is no specific, dedicated "STEM Centre" in Eyemouth high school currently but it has a significant and successful STEM program, particularly through its Greenpower Racing Car project, which serves as a de facto STEM hub for students in the area. The school's Technology department and a partnership with Borders College in particular provides students with opportunities to gain advanced skills, receive STEM awards, and engage in practical, hands-on activities like designing and building electric race cars. Eyemouth High School is a Greenpower Centre of Excellence, involved in designing, building, and racing electric cars. The school has won multiple awards from Borders College and the Greenpower event for its work in STEM, teamwork, and innovative design. The school collaborates with Borders College and local businesses to foster skills in areas like marine technology and advanced manufacturing. The school's Technology department offers subjects such as Digital Literacy, Computing Science, and Craft, Design, Engineering, and Graphics.

The new STEM innovation centre is hoped will further opportunities to engage a range of local business partners, where their business comprises STEM specialisms, to assist with the development of a lifelong approach to the acquisition of key skills and the creation of pathways into employment in green technologies, nautical industries.

14.10 All pupils will have access to outdoor learning spaces where science, nature and sport would be available at all times.

14.11 In terms of Admission arrangements, criteria for admission to Eyemouth primary school will continue to be in accordance with Scottish Borders Council current admission arrangements and there will be no changes to the catchment area.

14.12 Class structure and pupil/ teacher ratio will continue to be arranged by school management and will adhere to the guidelines as set out by the Scottish Government. Officers understand that there are no changes to classes anticipated.

14.13 Early Years and Family Centre

This new centre will enable parents to build strong community-based relationships and receive excellent support, which will shift from single to multi agency with the aim to intervene earlier and view the community as the greatest support for a family.

By creating a Community Hub of services this will improve efficiencies but will also improve communication between the services and facilitate a more collaborative approach.

14.14 EDUCATIONAL BENEFITS OF THE PROPOSALS-

IMPACT ON STAFF School Management/ Staff Teams

14.15 Should the proposal to relocate Eyemouth Primary school to the high school site, be progressed, the new relocated primary school will retain the existing management structure and organisation of the current primary school, and the high school will retain the existing management structures and organisation in place also. Officers understand that Eyemouth primary school has 40 staff membered and this includes administration, teachers, pupil support assistants, kitchen staff, janitorial service and SLT. Eyemouth high school has 80 members of staff altogether including those mentioned above.

14.16 Scottish Borders Council does therefore not foresee alterations to the current school management structure at Eyemouth Primary school or Eyemouth High School. All existing staffing facilitations and day to day operations within the establishment will continue as is. Any amendments to current staffing at Eyemouth Primary School will be undertaken in accordance Scottish Borders Council's statutory recruitments processes within normal operational requirements.

14.17 While there may be some duplication in some roles when the primary and high schools are combined, staff will have increased opportunities for collaborative work within a larger staff pool of colleagues with different strengths, skills and experience. The curriculum will be structured to allow cross collaboration between subjects and skillsets. The increased number of staff at the Campus will also allow more support and flexibility to staff with more cover available.

14.18 The new Campus will allow staff to build early relationships with pupils and their families and maintain these throughout the learning journey. In particular the pastoral team will be able to become involved at the start of the learning journey and develop greater knowledge and understanding of the young people within their care.

14.19A new separate detailed management structure will be designed for the new Early Years/Family Centre proposed to be built on the current Eyemouth primary school site once demolished, in order to optimise its performance and delivery of objectives, ensuring that consideration is given to the smooth and successful running of all the

elements of the provision. This will be considered in collaboration with all stakeholders through separate and thorough engagement processes.

14.20 Officers understand that the current occupancy at the Eyemouth Primary ELC hub is for 40 children. This includes 35 no.3 and 4 years olds and 5 no. 2-year-olds. Staffing for the current ELC is 10 members of staff plus SLT. The Early years Centre has two members of staff one being administration. There is no set occupancy, and it often depends on families who have signed up to events. Officers recognise that the current space can become crowded depending on attendance. The new centre would be intended to provide improved facilities to support the efficient management of events.

14.21 EDUCATIONAL BENEFITS OF THE PROPOSAL

IMPACT ON TRANSPORT – SAFE ROUTES TO SCHOOL

Any changes to the current transport arrangements will be minimal given the geography of the town. Safe Routes to School will be revised for pedestrian and vehicular access, with designated drop off and pick up areas for school buses and cars.

15 Equal Opportunities

15.1 As part of the consultation process, officers will need to consult during the consultation with a range of stakeholders, including children of both Eyemouth high school and Eyemouth Primary school, parents/carers of both schools, staff and the wider community and will address all the comments made during this process, some of which may include equality issues and will be covered by an Integrated Impact Assessment. An Integrated Impact Assessment (IIA) will be conducted by Council officers to meet statutory equality duties, to assess policies and practices and ensure compliance with all legislative requirements.

15.2 The aim of an IIA is to examine policies and practices in a structured way taking account of equality, human rights and socioeconomic disadvantage (poverty) implications when making decisions, ensuring the impact within the community is recognised and addressed accordingly. IIA screening is completed using the Council's Integrated Impact Assessment Toolkit and allows the Authority to recognise positive steps it can take to promote fairness and equality of opportunity for all. As part of the consultation process the Council will consult with a wide range of stakeholders, staff, parents/carers and young people and will welcome and address comments on the IIA process.

15.3 The outcome of the Integrated Impact Assessment will inform the Final Consultation Report and the Council's consideration of the proposed changes prior to reaching a decision on whether they should be implemented

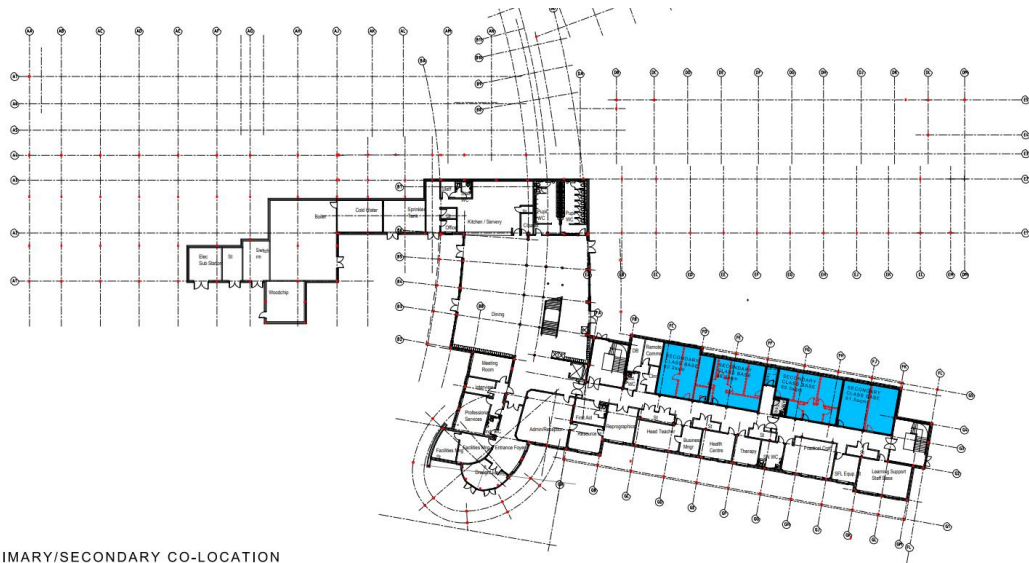
16. Preparation of Consultation Report timeline

16. 1 Council will review the Proposal having regard to the Education Scotland report, the written representations that it has received, and oral representations made to it by any person at the public meeting. It will then prepare a Consultation Report as mentioned in 5.3.

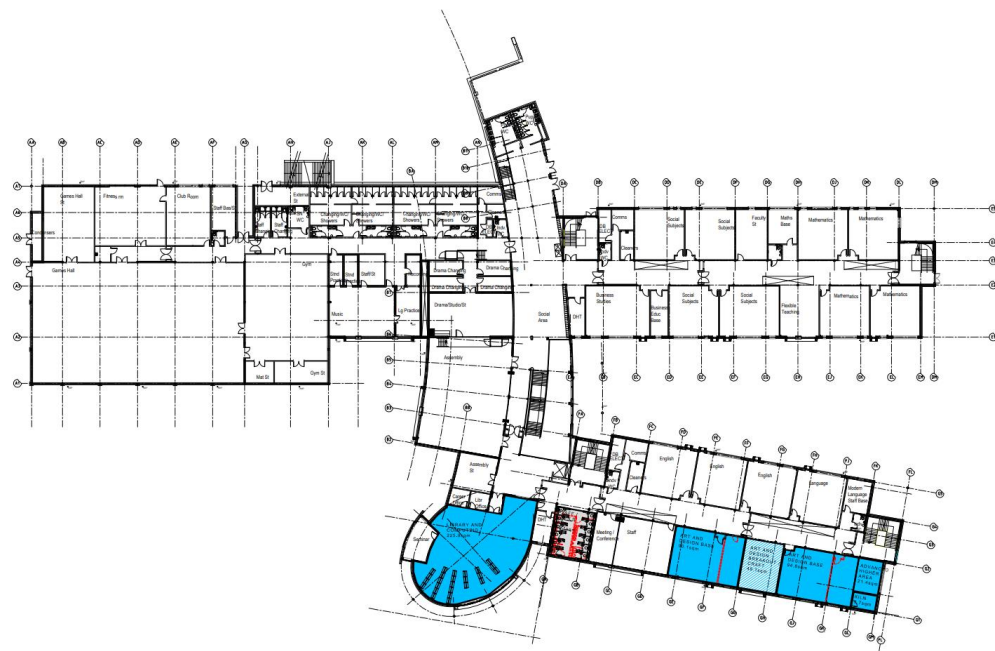
This will be published for a further three weeks and further views sought on that before it is then submitted to Council to decide on the proposal at the next scheduled Council Meeting following that. The anticipated date for the proposal to be placed before full council to make a final decision will be 19th February 2026.

No decision will be taken in regard to the Proposal by either the Council or the Council's Executive (Education) Committee until this statutory consultation process has been properly completed. It should be noted, that in order to progress the building programme and comply with funding requirements, the decision might want to be taken by the Council's project board to allow preparatory work to progress in tandem with this consultation process. There is therefore a risk attached to undertaking these works before a final decision is made regarding the primary school relocation consultation, but officers have balanced this against the budgetary and programme pressures of delivering a new school if the decision is made to proceed with the new school.

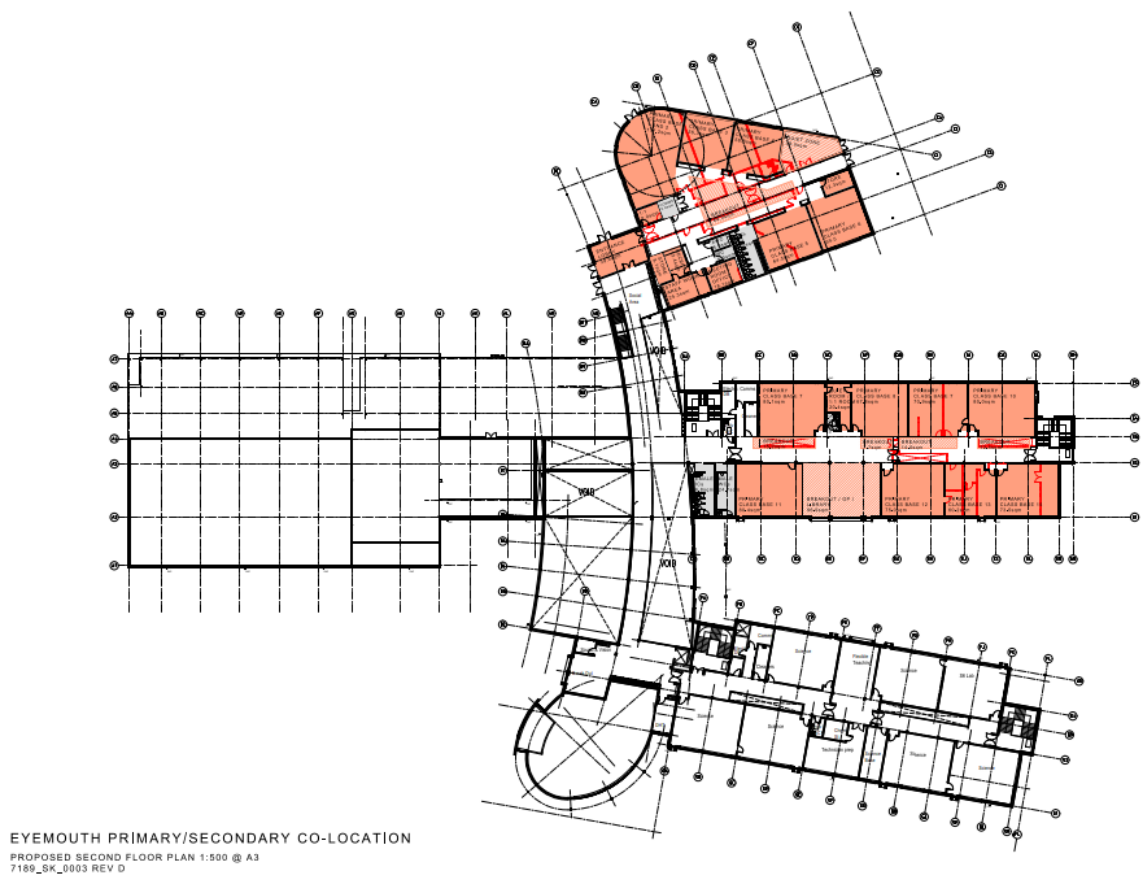
Appendix 1 -Further Proposed Architectural Drawings/Maps/ Illustrative diagrams

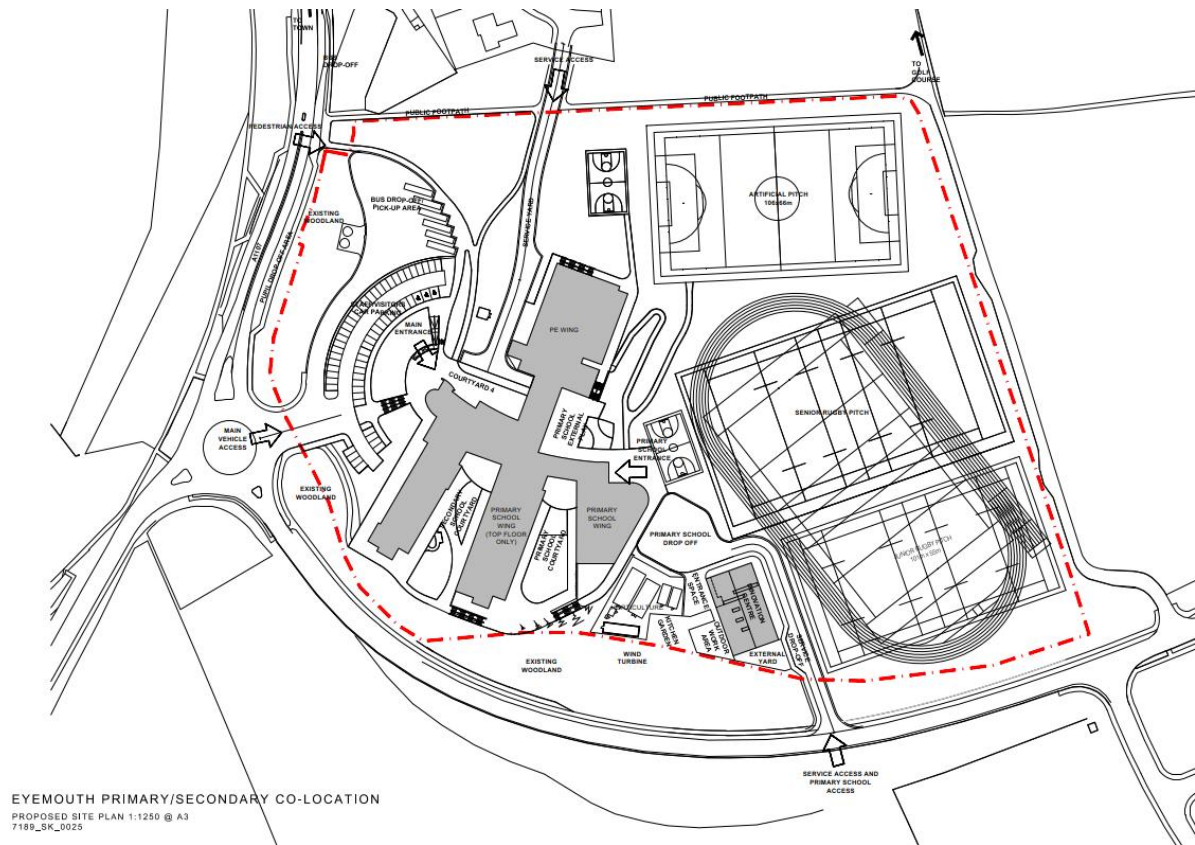


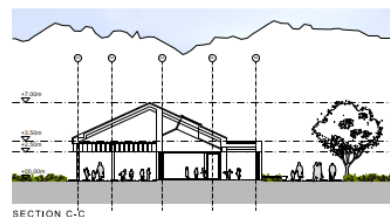
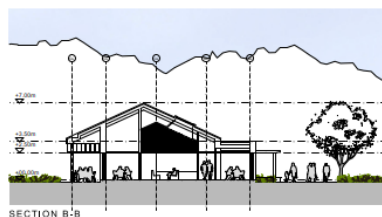
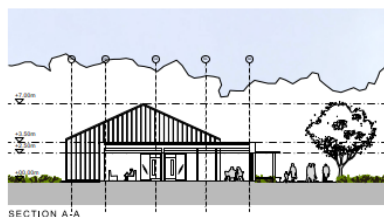
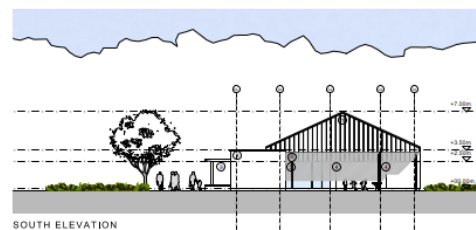
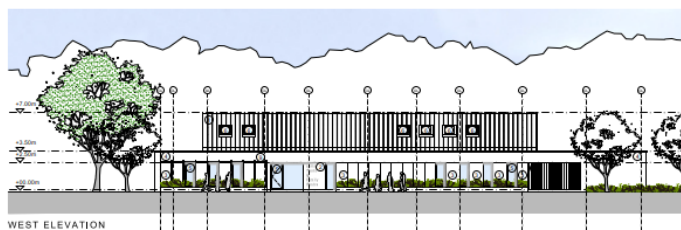
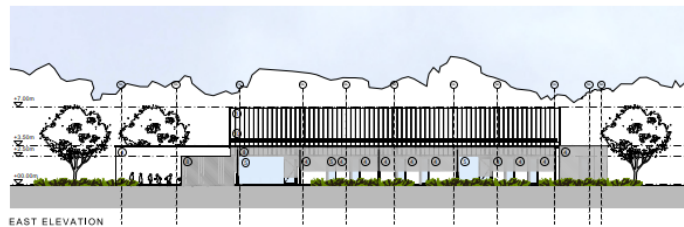
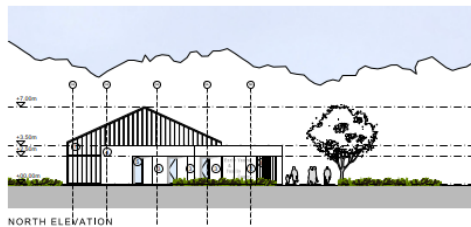
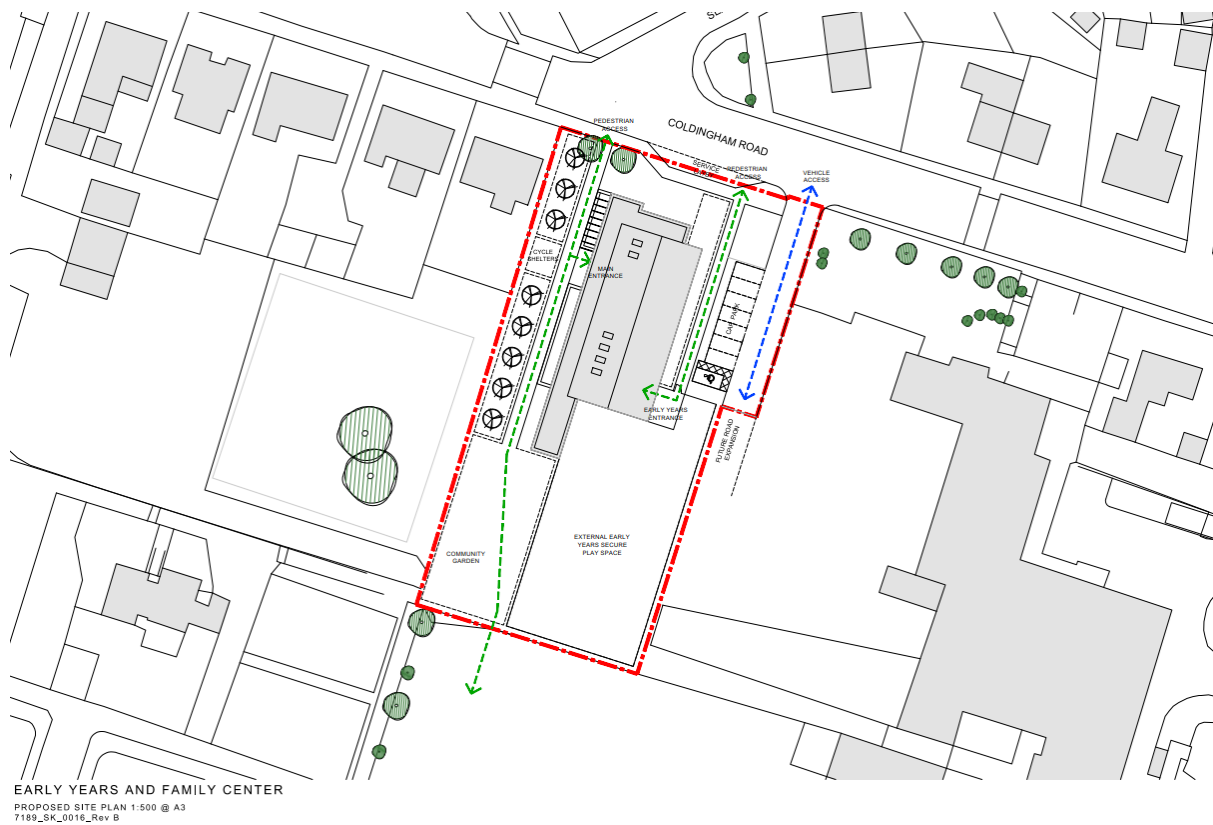
EYEMOUTH PRIMARY/SECONDARY CO-LOCATION
PROPOSED GROUND FLOOR PLAN 1:500 @ A3
7189_SK_0001



EYEMOUTH PRIMARY/SECONDARY CO-LOCATION
PROPOSED FIRST FLOOR PLAN 1:500 @ A3
7189_SK_0002

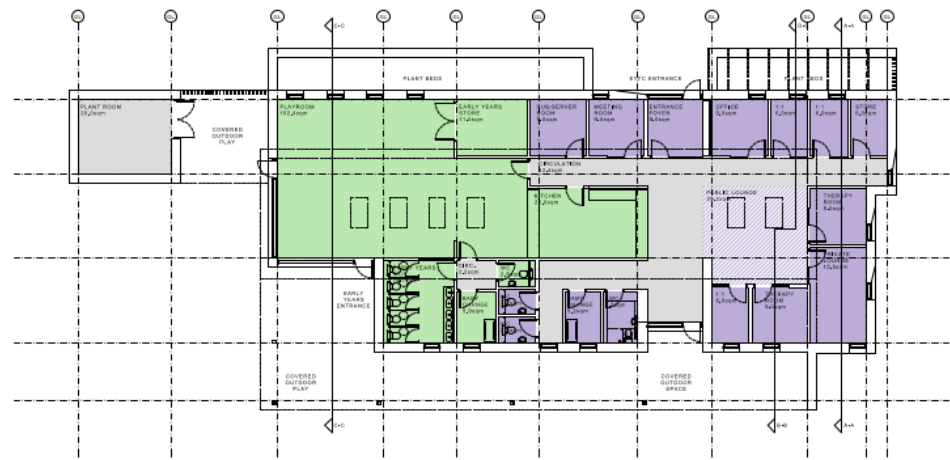






EYEMOUTH EARLY YEARS AND FAMILY CENTRE
PROPOSED SECTIONS AND ELEVATIONS 1:200 @ A2
7189_SK_0017

- MATERIALS KEY**
1. PPC ALUMINIUM STANDING BEAM METAL ROOF AND WALL CLADDING
 2. ACID ETCHED CONCRETE SIGNAGE PANEL WITH BRUSHED ALUMINIUM RIBBED SIGNAGE WHERE INDICATED
 3. MASONRY STONE CLADDING
 4. SMOOTH CEMENT RENDER HANGSCREEN CLADDING SYSTEM
 5. DOUBLE GLAZED THERMALLY BROKEN PPC ALUMINIUM PROPRIETARY CURTAIN WALLING SYSTEM WITH INTERNAL ENTRANCE DOORS WHERE INDICATED
 6. DOUBLE GLAZED THERMALLY BROKEN PPC ALUMINIUM PROPRIETARY CURTAIN WALLING SYSTEM WITH INTERNAL ENTRANCE DOORS WHERE INDICATED
 7. PPC ALUMINIUM FEATURE FINIS
 8. PPC ALUMINIUM PERIODICA
 9. CONCEALED GUTTER SYSTEM



EYEMOUTH EARLY YEARS AND FAMILY CENTRE
 PROPOSED GROUND FLOOR PLAN 1:200 @ A3
 GIFA 410 s&m
 7189_SK_0015 REV A

39

10

Appendix 3 – Form of Consultation Response form asking the question :-

Do you agree with the proposal regarding the:-

1. Relocation of Eyemouth Primary School to a reconfigured and extended Eyemouth High School building which will accommodate the relocation of Eyemouth Primary school (Children in Primary 1 to Primary 7)
 2. Reconfiguration and extension work is undertaken to Eyemouth High School, to provide for the relocation of Eyemouth Primary School.
 3. Current Eyemouth Primary School and associated accommodation is demolished.
 4. An Early Learning and Childcare (ELC/ Nursery) provision is located within a purpose-built Early Years and Family centre on the site of the existing primary school, once demolished.
 5. Finally , please state your reasons for agreement or disagreement with the proposal, and please provide any other comments or suggestions regarding the relocation of Eyemouth Primary School and the new build of the Early years and Family centre on the existing primary school site.
-

Avaia

<https://scotborders.citizenspace.com/regulatory-services/statutory-eyemouth-2025>

Or via QR CODE

